

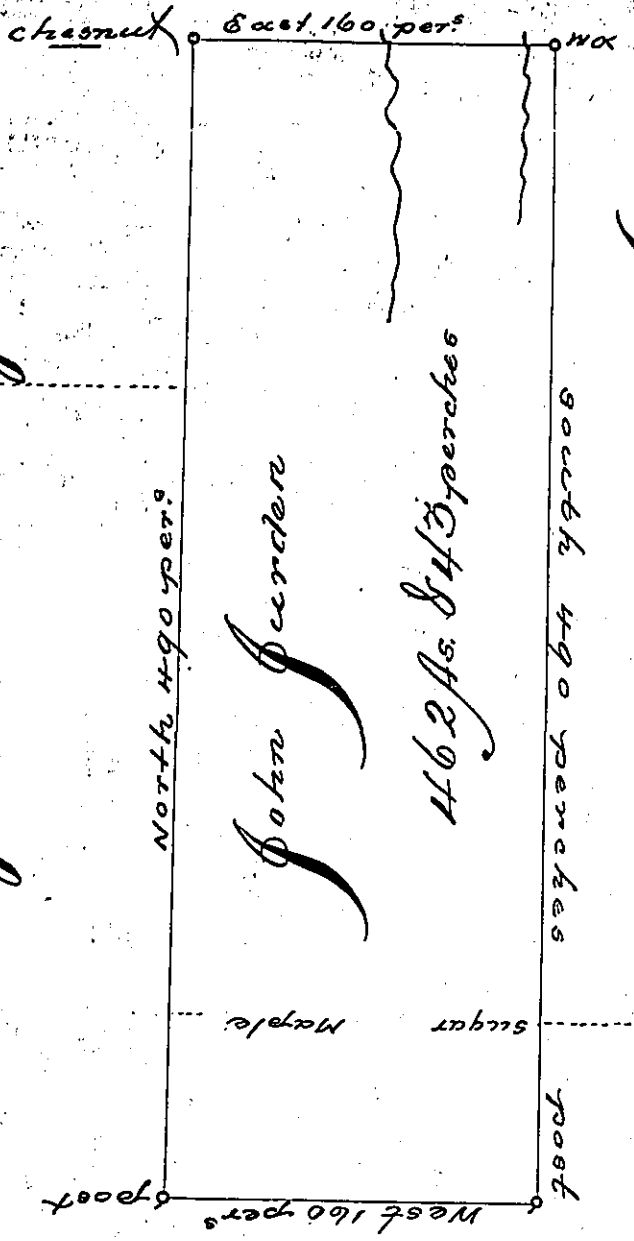
John Schwenk 81

280 1/2

John Moore

John Snyder

John Weidle



Situated on the Waters of two lick Creek in Wheatfield Township, Westmoreland County, Containing 462 acres & 43 perches & allowance of 690 Cent for Roads & Survey'd for John Snyder the 24th day of November 1794, on Warrant dated the 5 day of May 1798.

Daniel Brodhead Esq.
S. J.

James Ross, D. J.

IN TESTIMONY that the above is a copy of the original remaining on file in the Department of Internal Affairs of Pennsylvania, made conformably to an Act of Assembly approved the 16th day of February, 1833, I have hereunto set my Hand and caused the Seal of said Department to be affixed at Harrisburg, this fourth day of July 1899.



James W. Latta
Secretary of Internal Affairs